



GLOBAL EXIM GROUP

Empowering Growth and Fostering Partnerships

CORPORATE OVERVIEW

2024

WWW.GLOBALEXIM.GROUP

WELCOME TO GLOBAL EXIM GROUP

As a company with a diverse portfolio, we continually bolster our position by increasing investments in key sectors and fostering strategic partnerships, highlighting our unwavering commitment to growth and innovation.

At GLOBAL EXIM GROUP, we consistently tailor our products and services with unwavering commitment to meet client needs precisely. Adapting to evolving requirements, we consistently develop and implement customized funding solutions within and beyond our areas of expertise. Our extensive sector focus, spanning Food Commodities, Petroleum, Fertilizer Solutions, Mining, Patents, Manufacturing, Banking, Trade Finance, Sea Port, Logistics, IT, Software Development, Construction, Travel, Leisure, Tourism Experiences, and Social and Humanitarian initiatives, highlights our dedication to adaptability and innovation across various industries.

FOOD COMMODITIES

Introduction

Within Global Exim Group, our Food Commodities division proudly asserts ownership over vast acres of land dedicated to growing and cultivation, complemented by our mills and refineries for food production. Serving as a beacon of quality and reliability in the global market, we offer a diverse range of commodities to meet the needs of nations. We ensure that the food we provide is not only nourishing but also adheres to the highest standards of certification. Delve into the richness of our Food Commodities portfolio, where excellence is intertwined with integrity under our ownership.



Sugar Products

Dive into the world of sweetness with our premium sugar offerings:

- **White Refined Sugar:** Exceptional purity and crystalline perfection make it an ideal choice for various culinary applications.
- **VHP (Very High Polarization) Sugar:** Elevate your sweet experience with our highpolarization sugar, ensuring superior quality.
- **Brown Sugar:** Infuse richness into your dishes with our distinct brown sugar, adding depth of flavor.
- **Molasses:** Explore the versatility of molasses, a byproduct of sugar refining, known for its robust taste and nutritional benefits.

Certified to meet your dietary requirements:

- **Halal & Kosher Certified:** Our commitment to inclusivity ensures that our sugar products adhere to Halal and Kosher standards.

Soy and Corn Products

Beyond sugar, we offer a selection of soy and corn products to cater to different dietary choices:

- **Soy - GMO & Non-GMO Options:** Choose from our range of soy products, accommodating both GMO and non-GMO preferences.
- **Corn - GMO:** For those seeking GMO options, our corn products provide quality and choice.



Coffee

Welcome to Global Exim Group Brazil, a distinguished player in the world of coffee.

As a key member of Brazil's largest coffee cooperative, we as part of the cooperative take pride in contributing to over 60% of the nation's coffee exports.

Our unique approach involves strong partnerships with farmers and a cutting-edge roasting house strategically located at the port.

Nestled in the mountain regions of Espírito Santos and Minas Gerais, our arabica and robusta beans flourish, producing Brazilian coffee renowned for its intense aroma and fine body—truly among the world's finest.

At Global Exim Group Brazil, we stand poised to meet and tailor all your coffee requirements, ensuring a premium experience for enthusiasts across the globe.



Meat and Poultry

Discover our selection of Halal and Kosher certified meat and poultry, adhering to the highest standards of religious dietary practices:

- **Meat:** Offering Halal and Kosher options to meet diverse culinary needs.
- **Poultry:** Ensuring our poultry products are certified to both Halal and Kosher standards, delivering quality with every bite.

Livestock Varieties

Embark on a journey of livestock diversity, providing both meat and dairy solutions:

- **Nelore:** Renowned for its robustness and adaptability, our Nelore cattle produce highquality meat, meeting Halal and Kosher standards.
- **Girolando:** The perfect blend of Holstein and Gyr, our Girolando breed offers versatile dairy solutions for a variety of preferences.

Conclusion

Be assured: Global EXIM goes beyond providing food commodities; we deliver a culinary experience that is diverse, reliable, and meets the highest standards of quality and certification.

PETROLEUM

Introduction

At Global EXIM, we are at the forefront of delivering excellence in the realm of petroleum commodities.

Our commitment to quality and innovation has established us as a trusted provider of a diverse range of petroleum products and services.

Explore our offerings and discover why we stand out in the industry.



Petroleum Products

Fueling Progress with Precision:

- **Gasoil:** Diesel EN590: A benchmark in diesel quality, our Gasoil complies with EN590 standards, ensuring optimal performance and efficiency.
- **Kerosene:** Choose from our selection of kerosene, including Jet A-1 and Jet A, providing high-quality solutions for aviation and other applications.
- **Additives:** Enhance your fuel performance with our range of additives. From the most common to specialized varieties, our additives cater to diverse needs. For specific inquiries, please reach out to us.

Tank Storage

In collaboration with industry leaders such as PetroBras and other majors, we offer contracted tank storage solutions.

These facilities are strategically located in Brazil and various key global locations, ensuring secure and efficient storage for all fuel-related products.

Trust in us for reliable and accessible tank storage options to meet your operational needs.



Drum and Barrel Factory (Opening Mid-2024)

Revolutionizing Storage Solutions:

- **Location:** Our state-of-the-art Drum and Barrel Factory is strategically positioned between Abu Dhabi and Dubai, at the heart of the petroleum industry.
- **Production Capacity:** With an impressive capacity of 500,000 steel drums per month, we ensure consistent and reliable supply.
- **Product Variety:** In addition to steel drums, we offer plastic drums and jerrycans, providing versatile packaging solutions for your petroleum products.

Experience the future of drum and barrel production with Global EXIM. Our new facility, opening mid-2024, is set to redefine industry standards and elevate your storage experience.

Conclusion:

Global EXIM continues to set the pace in the petroleum industry, delivering quality, reliability, and innovation. Partner with us for a future fueled by excellence.

FERTILIZER PRODUCTS

Introduction

Our commitment to agricultural excellence is embodied in our advanced fertilizer solutions.

With a diverse range of products, groundbreaking patents, and strategic manufacturing facilities, we are proud to contribute to the global agricultural landscape. Explore the innovation that sets us apart in the fertilizer industry.



Fertilizer Products

Nourishing Growth, Harvesting Success:

- **Urea:** A vital nitrogen source supporting plant development.
- **N, P, and K:** Our comprehensive range of fertilizers provides the essential nutrients nitrogen, phosphorus, and potassium.
- **Monoammonium Phosphate (MAP):** Enhancing plant growth with a balanced combination of nitrogen and phosphorus.
- **Potassium Chloride (KCL):** A reliable source of potassium for optimal plant health.
- **Potash:** Contributing essential potassium for robust crop development.
- **Ammonia:** A foundational component in various fertilizer formulations.
- **Ammonia Water:** A versatile solution for controlled ammonia application.
- **Ammonium Nitrate:** Providing a crucial nitrogen source for plant nutrition.
- **UAN (Liquid Nitrogen Fertilizers):** A convenient liquid nitrogen option for efficient nutrient delivery.

Patents and Manufacturing Facilities

Setting New Standards in Fertilizer Innovation:

Fertilizer Patents: Our commitment to innovation is evident in our proprietary fertilizer product, boasting 27 granted patents. With a remarkable 100% absorption rate—far exceeding popular methods with absorption rates of only 30-40%—our patented fertilizer ensures over 40% savings and eliminates losses or damages during transportation, handling, and soil introduction.

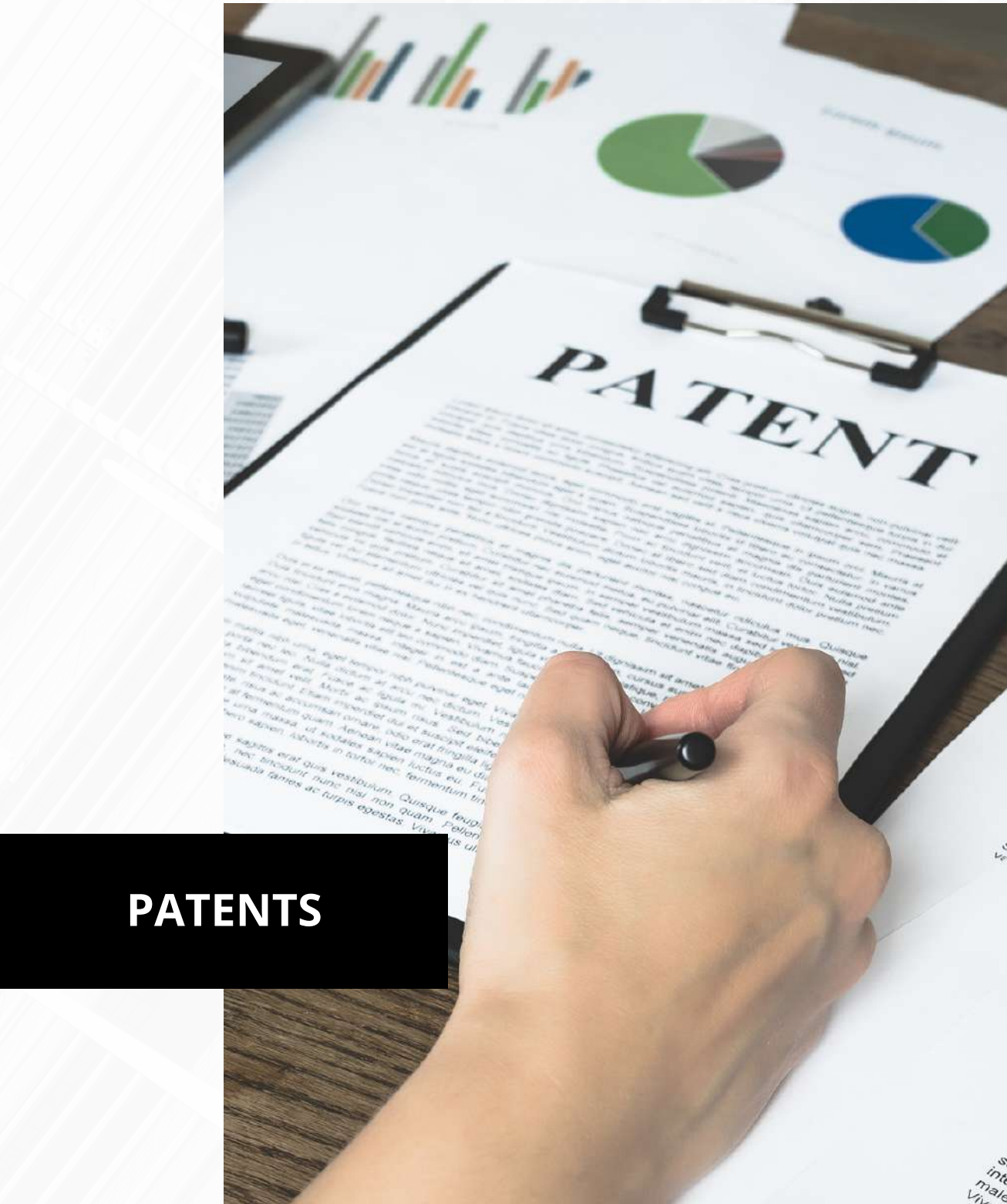
- Strategic Partnership: In collaboration with GEG, we co-own patents and manufacturing rights for this revolutionary fertilizer product.

Manufacturing Facilities:

- **Ukraine Facility:** Our first manufacturing facility, established in Ukraine, has been contributing to the agricultural sector. *(Of Note: Due to current geopolitical circumstances, operations in the Ukraine Facility are temporarily on hold.)*
- **Brazil Facility (Opening March 2024):** In line with our global expansion strategy, our second state-of-the-art facility is under construction in Brazil and is set to open its doors in March 2024. This facility will further strengthen our commitment to sustainable agriculture and global agricultural advancement.

Conclusion:

Global EXIM is sowing the seeds of innovation and reaping agricultural success. Join us on this journey of growth, where our cutting-edge fertilizer solutions redefine possibilities for farmers worldwide.



PATENTS

A large-scale mining operation is shown in a wide-angle shot. In the foreground, a yellow tracked excavator with a large bucket is positioned on the left, facing right. To its right, a yellow articulated dump truck is loaded with dark, rocky material. In the background, another yellow tracked vehicle, possibly a bulldozer, is visible, working on a large pile of earth. The ground is dark and uneven, typical of a mining site. The sky is hazy, suggesting dust or mist. The overall scene conveys a sense of industrial activity and resource extraction.

MINING, MINERALS AND REFINERIES



MINING, MINERALS AND REFINERIES

Introduction

The commitment to excellence extends beyond agriculture into the realm of mining and minerals. With vast privately owned mining lands, strategic partnerships, and a wealth of mineral resources, Global EXIM is at the forefront of sustainable and responsible resource extraction.

Explore the richness of our mining portfolio, where confidentiality, strategic partnerships, and ethical practices converge.



Mining Areas

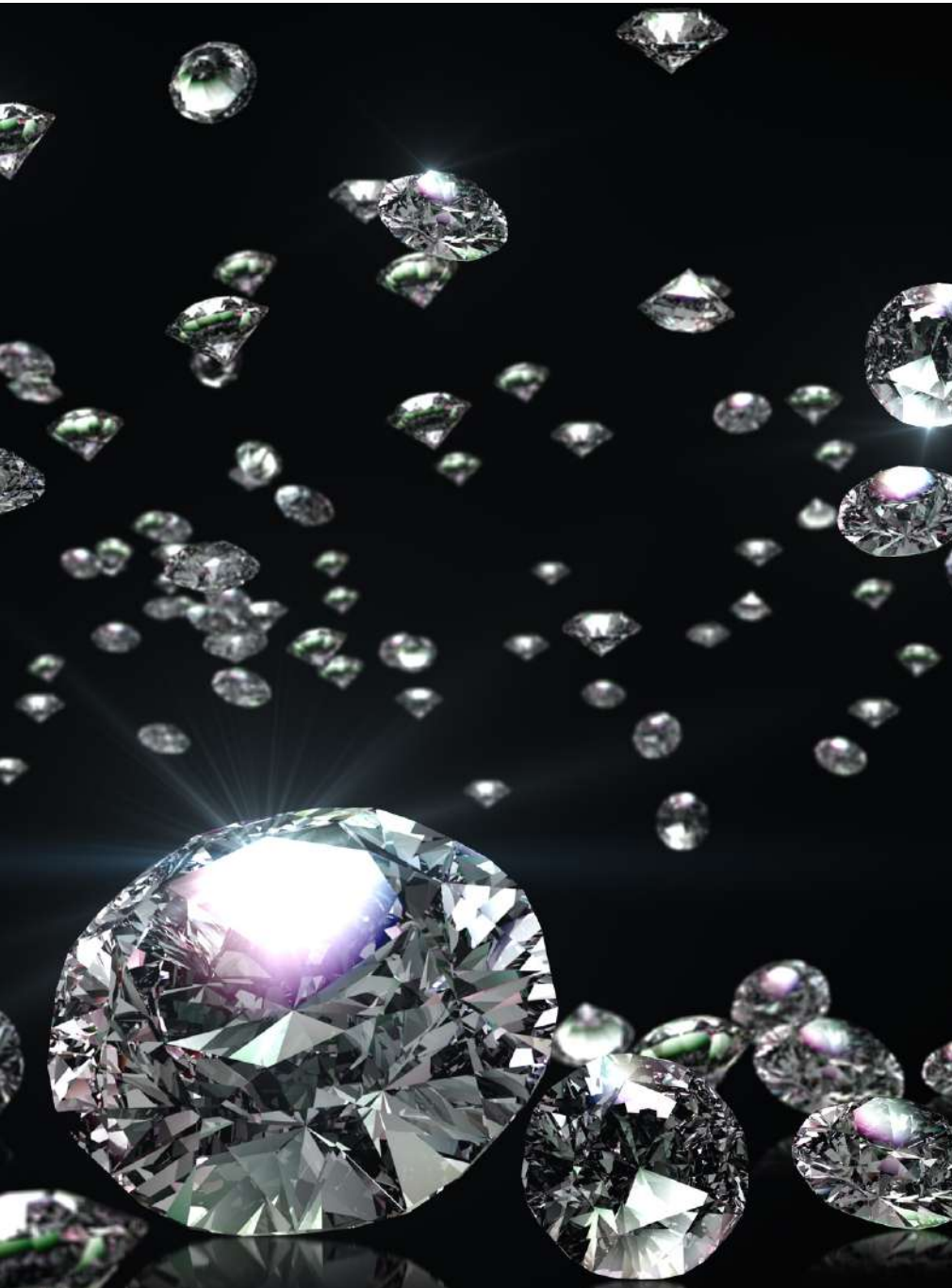
Unlocking the Earth's Treasures:

- **Mining Area 1:** Boasting over 248,000 hectares of privately owned mining land since 1960, we have established a legacy in responsible resource management.
- **Mining Area 2:** Extending our footprint, over 150,000 hectares of mining land are either privately owned or leased with mining rights, reflecting our commitment to sustainable extraction practices.
- **Confidential Studies and Geological Reports:** All studies and geological reports are treated with the utmost confidentiality and provided at our discretion, ensuring the protection of our valuable insights.

Metals

Forging the Future with Metals:

- **Gold:** Our gold deposits, supported by confidential studies and geological reports, underline our dedication to responsible resource management.
- **Iron Ore:** A foundational element in various industries, our iron ore resources contribute to global development.
- **Copper and Other Metals:** Our portfolio extends beyond gold and iron ore, encompassing a diverse array of metals to meet the demands of various industries.



Tantalite and Niobium

Rare Elements, Abundant Potential:

- **Tantalite:** Home to one of the world's largest deposits, our tantalite resources play a crucial role in high-tech industries. Confidential studies and geological reports ensure the strategic management of this valuable resource.
- **Niobium:** With very large deposits, our niobium resources contribute to technological advancements. Confidential studies and geological reports guide our responsible extraction practices.

Diamonds and Gems

Unveiling Nature's Brilliance:

- **White to Fancy Colored Diamonds:** Our diamond resources, carefully studied and geologically documented, capture the spectrum of nature's beauty.
- **Emeralds, Rubies, Tourmalines, and More:** Explore a world of precious and semiprecious gems, each sourced responsibly and contributing to the world of jewelry and craftsmanship.



Coal

Powering Progress Responsibly:

- **Kalimantan and Sumatra, Indonesia:** Through strategic partnerships with major players in the Kalimantan and Sumatra regions, we have established a significant presence in the coal industry.
- **Mining and Export Licenses:** All licenses for mining and exportation are available for review, highlighting our commitment to transparency and compliance.

Conclusion

At Global EXIM, our mining and minerals division is dedicated to responsible resource management, sustainable practices, and ethical partnerships. Join us in unlocking the potential of the Earth while preserving its treasures for generations to come.

A photograph of a modern building facade with a large, three-dimensional "BANK" sign mounted on the roofline. The building has a glass and metal structure, and the sky is visible through the glass panels.

BANK

BANK AND TRADE FINANCE

Introduction

Global EXIM's commitment to excellence extends beyond our core industries into the realm of financial services.

As a privately owned bank with a focus on sustainable practices and ethical finance, we offer a suite of banking and trade finance solutions to meet the diverse needs of our clients.

Explore the strength of our financial services where integrity, expertise, and innovation converge.



Banking Services

A Foundation Built on Trust:

- **Privately Owned Bank:** Our institution is privately owned, ensuring a personalized and client-centric approach to banking.
- **Licensed for Gold Deposits:** Holding a specialized license for gold deposits sourced from mining and refineries, we facilitate secure and efficient financial transactions related to this precious resource.

Trade Finance

Empowering Global Trade:

- **Monetization of Bank Instruments:** Utilize our expertise in the monetization of bank instruments, unlocking the latent value in financial instruments to fuel your business growth.
- **Trades and High-Yield Derivative Trades:** Explore new horizons in trade finance with our comprehensive solutions. Engage in trades and high-yield derivative trades with confidence, backed by our financial expertise and commitment to delivering value.



Client-Centric Approach

Tailored Solutions for Your Success:

- **Personalized Service:** Our client-centric approach ensures that each client receives personalized attention and solutions that align with their unique financial goals.
- **Expert Guidance:** Benefit from the expertise of our financial professionals who are dedicated to navigating the complexities of banking and trade finance on your behalf.

Ethical Finance

Commitment to Integrity and Sustainability:

- **Sustainable Practices:** We prioritize sustainability in our financial operations, adhering to ethical and responsible banking practices.
- **Environmental and Social Responsibility:** Our commitment extends beyond financial transactions; we actively contribute to environmental and social initiatives, ensuring our financial activities align with global values.

Conclusion

Global EXIM. We see banking and trade finance as more than just transactions; we see them as opportunities to foster growth, build relationships, and contribute to a sustainable and ethical financial ecosystem. Join us in shaping the future of finance.



SEAPORT DIVISION



SEAPORT DIVISION

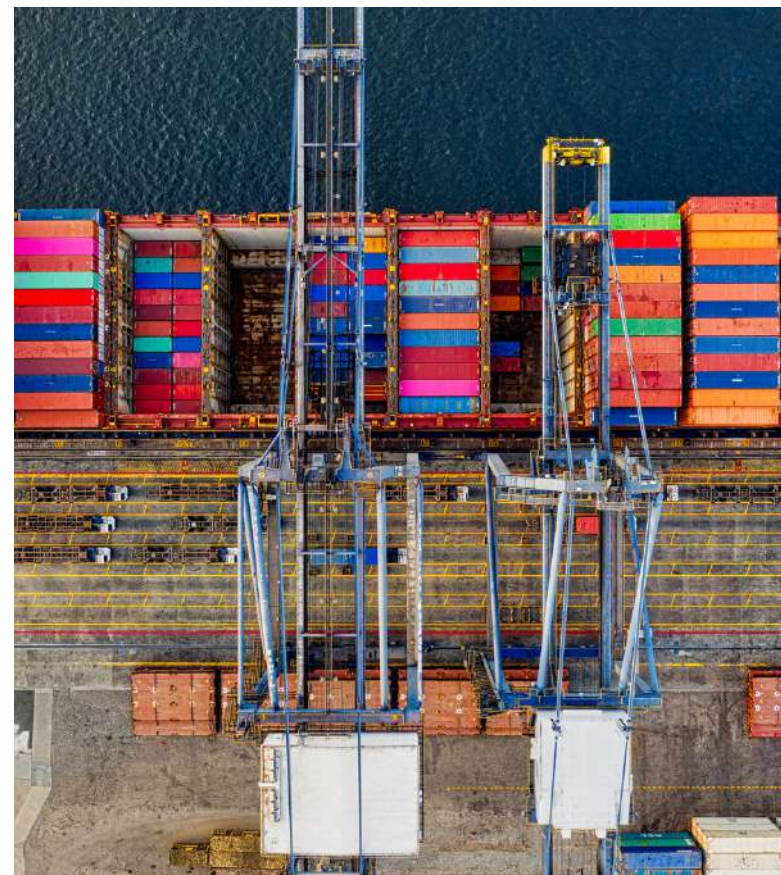
2024
Global Exim Group

Introduction

Global EXIM is proud to introduce our strategic presence in the maritime industry, anchored by our dedicated seaport facility.

With a prime terminal in the renowned Port of Santos, Brazil, and innovative logistics solutions, we offer unparalleled access and efficiency for global trade.

Explore the advantages of partnering with us for seamless and reliable maritime operations.



Dedicated Terminal in the Port of Santos, Brazil

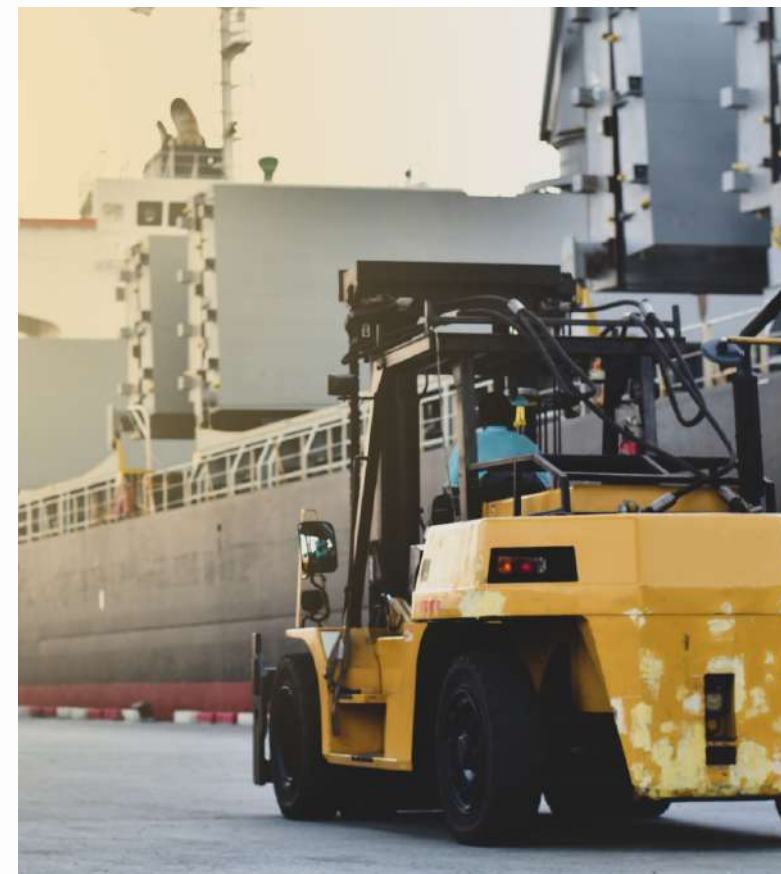
Strategic Excellence on the Shores:

- **Prime Location:** Our dedicated terminal, strategically acquired in collaboration with our trusted partner, stands proudly in the bustling Port of Santos, Brazil—one of the world's premier maritime hubs.
- **Exclusive Access:** Enjoy exclusive access to our terminal, ensuring efficient and streamlined operations for your maritime activities.

Off-Premises Warehouse with Conveyor System

Revolutionizing Maritime Logistics:

- **Outside-of-Port Warehouse:** Complementing our dedicated terminal, we have an offpremises warehouse strategically positioned to facilitate seamless logistics outside the port.
- **Conveyor System:** Enhance your shipping operations with our state-of-the-art conveyor system, ensuring swift and secure transportation of goods from the warehouse to the port. This innovative solution is fully licensed and authorized, exclusively available to GEG and our valued partner.



Advantages of Our Seaport Facility

Efficiency, Reliability, and Exclusive Access:

- **Fully Licensed and Authorized:** Rest assured, our seaport operations adhere to the highest standards. Our facilities, including the off-premises warehouse and conveyor system, are fully licensed and authorized, exclusively available to GEG and our strategic partner.
- **Streamlined Operations:** With a dedicated terminal and off-premises warehouse, we ensure your maritime operations are not just efficient but also meticulously planned for optimal results.
- **Global Connectivity:** Located in the Port of Santos, our seaport facility offers global connectivity, providing a gateway for your products to reach diverse markets around the world.

Conclusion

Our seaport facilities are more than infrastructure; they are the gateway to your global success.

Partner with us for exclusive access, efficient operations, and a maritime experience that sets new standards in the industry.



LOGISTICS

Introduction

Global EXIM redefines logistics and shipping, delivering comprehensive solutions across air, sea, rail, and road transportation. With a commitment to excellence, strategic partnerships, and a robust network, we ensure seamless and efficient movement of goods worldwide. Explore the capabilities that make us the trusted choice in logistics and shipping.



Integrated Transportation Solutions

Connecting Continents, Delivering Excellence:

- **Air-Sea-Rail-Road:** Our logistics expertise spans across air, sea, rail, and road transportation, offering a one-stop solution for your diverse shipping needs.
- **Global Network:** With a global network of partners and agents, we provide end-to-end transportation solutions, ensuring your cargo reaches its destination efficiently and reliably.

Trucking and Transportation Expertise

We are Driven to Enable your Success:

- **Top 5 Companies in the USA:** We proudly collaborate with the top 5 companies in the USA for trucking and transportation. Our strategic alliances ensure that your cargo is in the hands of industry leaders, guaranteeing quality and reliability.
- **Truck and Trailer Leasing:** Explore our truck and trailer leasing services, providing you with flexible and cost-effective options to meet your transportation requirements. Our well-maintained fleet is equipped to handle a variety of cargo, ensuring the safe and secure transportation of your goods.



Key Advantages

Choosing Global EXIM for all your Logistical Needs:

- **Efficiency:** Our logistics operations are designed for efficiency, ensuring timely and precise delivery of your goods.
- **Flexibility:** We understand that every shipment is unique. Our flexible logistics solutions cater to the specific requirements of your cargo, whether by air, sea, rail, or road.
- **Reliability:** With a commitment to reliability, we take pride in being a trusted partner for your logistics and shipping needs. Our track record speaks volumes about the consistency and dependability of our services.

Customized Solutions for Your Business

Tailored to Fit Your Stringent Requirements:

- **Customized Logistics Solutions:** At Global EXIM, we believe in customization. Our logistics experts work closely with you to design tailored solutions that align with your business goals and requirements.
- **Consultative Approach:** Our consultative approach ensures that we understand your unique challenges and objectives, allowing us to offer solutions that make a real impact on your logistics and shipping operations.

Conclusion

We go beyond transportation; we deliver solutions. Partner with us for a seamless and reliable logistics experience that drives your business forward.

INFORMATION TECHNOLOGY

2024
Global Exim Group

Introduction

Global EXIM is at the forefront of innovation in Information Technology, leveraging cuttingedge solutions to propel businesses into the future.

Our IT division is a hub of talent, creativity, and technological prowess, dedicated to delivering excellence in software development, exploring the potential of blockchain, and even venturing into the realm of Initial Public Offerings (IPOs).

Dive into a world where technology meets ingenuity, where possibilities are limitless.



Software Developers

Innovating Tomorrow, Today:

- **Talented Team:** Our software development team comprises some of the brightest minds in the industry. From conceptualization to implementation, we are dedicated to crafting solutions that transcend expectations.
- **Customized Solutions:** Tailoring software solutions to meet your unique business needs is our forte. Whether it's creating bespoke applications or optimizing existing systems, our developers are committed to delivering excellence.

IPO - Initial Public Offering

Unlocking Growth Opportunities:

- **Strategic Planning:** We guide businesses through the complexities of Initial Public Offerings (IPOs), offering strategic planning and execution to ensure a successful transition to the public market.
- **Financial Expertise:** Our financial experts collaborate with IT specialists to provide comprehensive support, enabling a seamless IPO process and positioning your company for continued success.

Blockchain Solutions

Revolutionizing Trust and Transparency:

- **Blockchain Technology:** Explore the vast potential of blockchain, where transparency and security converge. Our experts harness the power of blockchain to revolutionize processes, enhance security, and unlock new possibilities for your business.
- **Smart Contracts:** Embrace the efficiency of smart contracts, streamlining agreements and transactions with automated, secure, and transparent processes.

Key Advantages of Our IT Division

Choosing Global EXIM for Your IT Needs:

- **Innovation at its Core:** Our IT division thrives on innovation. We consistently push boundaries, staying ahead of industry trends to provide our clients with the latest and most effective solutions.
- **Cross-Disciplinary Expertise:** Beyond software development, we integrate financial expertise with IT solutions, ensuring a holistic approach to your technological and business needs.
- **Client-Centric Approach:** Our client-centric approach ensures that your unique challenges and objectives are at the forefront of every solution we create. We are committed to your success.

Conclusion

At Global EXIM, we redefine Information Technology by blending creativity, expertise, and strategic vision. Partner with us to embark on a transformative journey where technology becomes a catalyst for your business growth.



IT & IPO

CONSTRUCTION



CONSTRUCTION

Introduction

Global EXIM builds foundations for a better tomorrow.

With a commitment to quality, innovation, and sustainable development, our Construction division is a powerhouse of expertise.

From transforming landscapes with state-of-the-art infrastructure to creating homes that stand the test of time, we take pride in shaping the future through construction excellence.



Infrastructure: Highways, Roadways, Bridges

Connecting Communities, Building Networks:

- Highways: Our construction prowess extends to the creation of modern highways, ensuring efficient connectivity and smooth transportation networks.
- Roadways: From urban roads to rural pathways, we design and construct roadways that facilitate seamless movement and enhance accessibility.
- Bridges: Spanning gaps and connecting communities, our bridge construction projects stand as engineering marvels, blending functionality with aesthetic design.

Housing and Buildings

Crafting Living Spaces, Building Dreams:

- Prefabricated and Pre-Cast Housing and Buildings: Embrace the future of construction with our prefabricated and pre-cast housing solutions. Innovative, sustainable, and efficient, these structures redefine modern living.
- Schools: We believe in constructing more than buildings; we build the foundations of education. Our school construction projects create environments conducive to learning and growth.
- Low and Mid-Class Housing: Bridging the gap between affordability and quality, our low and mid-class housing projects are a testament to our commitment to providing comfortable and secure living spaces for all.



Key Advantages of Our Construction Division

Choosing Global EXIM for Your Construction Needs:

- **Expertise Across Sectors:** Our construction expertise spans diverse sectors, from infrastructure development to housing projects. This versatility ensures that we can meet the unique needs of any construction endeavor.
- **Innovation in Design:** We approach every project with a commitment to innovation in design. Our architects and engineers collaborate to create structures that not only serve their purpose but also stand as symbols of architectural brilliance.
- **Sustainability at the Core:** Sustainability is woven into the fabric of our construction philosophy. From eco-friendly materials to energy-efficient designs, we ensure that our construction practices contribute to a greener, more sustainable future.

Conclusion

At Global EXIM, we don't just construct; we shape landscapes, build communities, and lay the groundwork for a better future. Partner with us to experience the transformative power of construction that goes beyond just bricks and mortar.

GLOBAL EXIM'S SOCIAL AND HUMANITARIAN PROJECTS

2024
Global Exim Group

Introduction

Our commitment to social and humanitarian causes is at the heart of our mission.

Through our Social & Humanitarian Projects, Global EXIM strives to make a positive impact on communities worldwide.

From supporting education to providing healthcare and addressing basic needs, our initiatives are aimed at fostering a better and more compassionate world.



Schools

Nurturing Minds, Shaping Futures:

- **Schools:** Education is the foundation of a thriving society. Through our commitment to supporting schools, we've made a meaningful impact on the lives of students, providing them with the tools and opportunities they need to succeed.

Hospitals: Hisar

Healthcare for All:

- **Hisar Hospitals:** We take pride in contributing to healthcare through our support of Hisar Hospitals. Our commitment extends beyond physical structures; it encompasses the well-being of individuals and communities, ensuring access to quality healthcare services.



Clinics: Opening Globally

Expanding Access, Transforming Lives:

- **Opening Globally:** Our clinics initiative reaches far and wide, opening doors to healthcare in regions that need it the most. From the countries of Central Asia to Asia, Africa, and Latin America, our clinics bring essential medical services to those who need them.

Food Donations

Addressing Hunger, One Meal at a Time:

- **Worldwide Donations:** In our effort to combat hunger, we contribute by donating various types of food to the less fortunate around the world. It's our way of ensuring that no one goes to bed hungry, fostering stronger and healthier communities.

Heating and Fuel

Warmth for Cold Regions:

- **Coal and Energy Donations:** In cold regions of the world, access to heating and fuel is essential for survival. We contribute by donating coal and other energy products where they are most needed, ensuring that communities stay warm and have the resources they need to thrive.

Key Advantages of Our Social & Humanitarian Initiatives: Choosing Global

Choosing Global EXIM for Social Impact:

- **Global Reach:** Our humanitarian projects have a global reach, touching lives and making a positive impact in various regions around the world.
- **Comprehensive Approach:** We believe in addressing the diverse needs of communities. From education and healthcare to basic necessities like food and heating, our initiatives take a comprehensive approach to social and humanitarian support.
- **Sustainability:** Our commitment to social impact is rooted in sustainability. By supporting schools, hospitals, clinics, and providing essential resources, we contribute to building resilient and self-sufficient communities.

Conclusion

Believe in the power of corporate responsibility! Through Global EXIM's Social & Humanitarian Projects, we aim to create a brighter, healthier, and more compassionate world for all.

GLOBAL EXIM'S SOCIAL AND HUMANITARIAN PROJECTS



PEOPLE



THANK YOU

Empowering Growth and Fostering Partnerships

WWW.GLOBALEXIM.GROUP